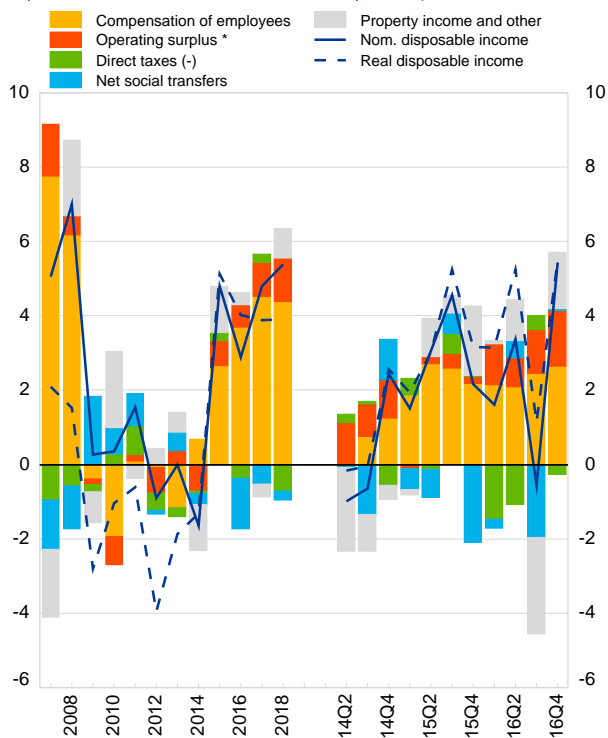


1. Household disposable income and components

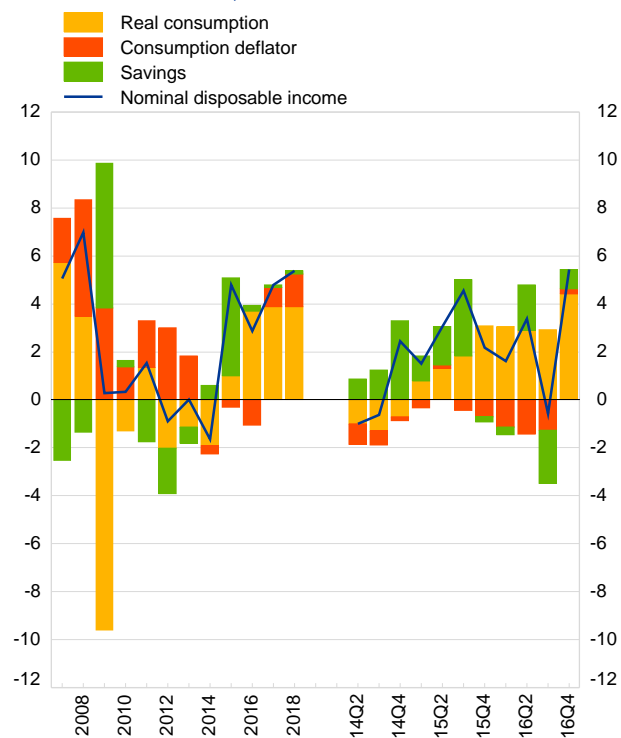
(annual percentage change of real and nominal per capita disposable income and contribution of components)



* Including mixed income.

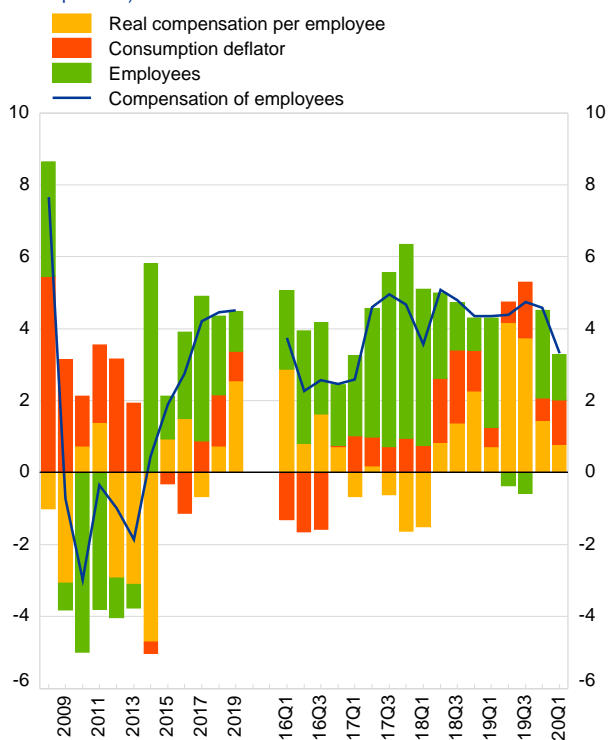
2. Household nominal disposable income and its uses

(annual percentage change of per capita nominal disposable income and breakdown into its uses)



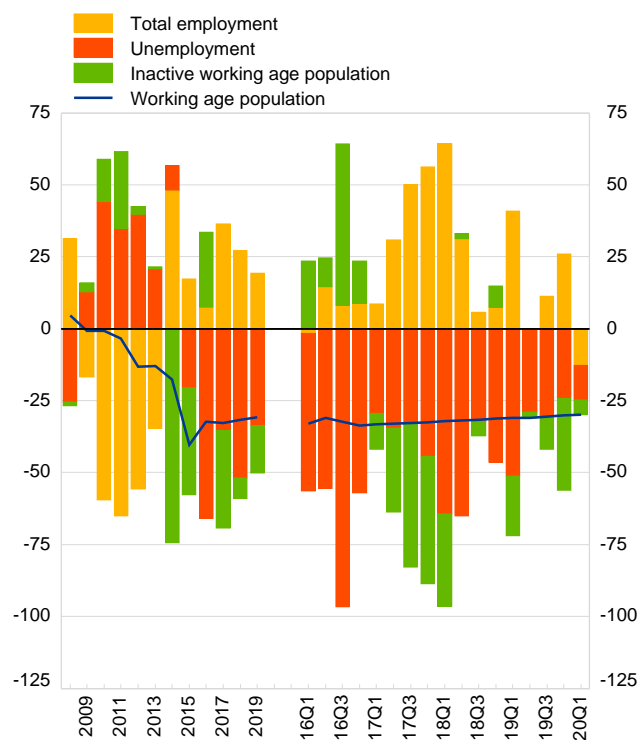
3. Compensation of employees and components

(annual percentage change of compensation of employees and its components)



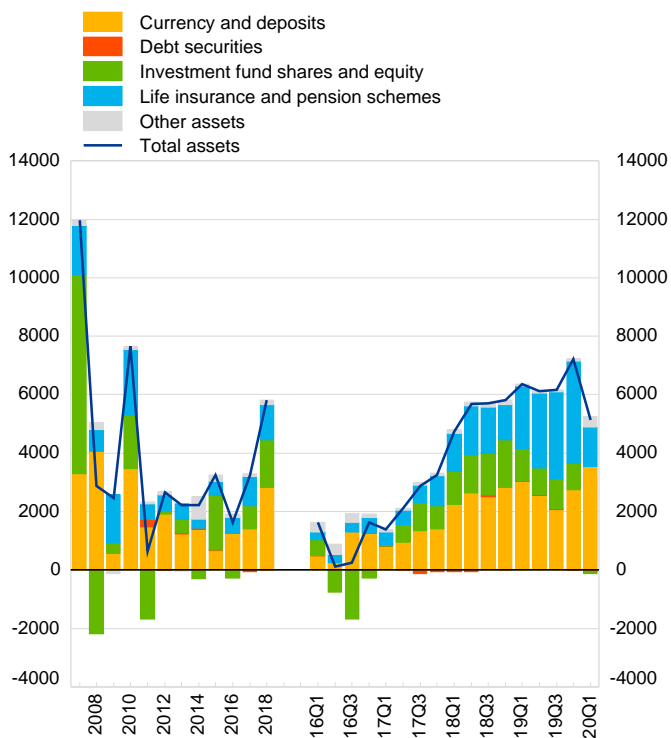
4. Labour market participation, employment and unemployment

(thousands of people aged 15 to 64, year-to-year difference)



6. Household investments in financial assets and contributions by components

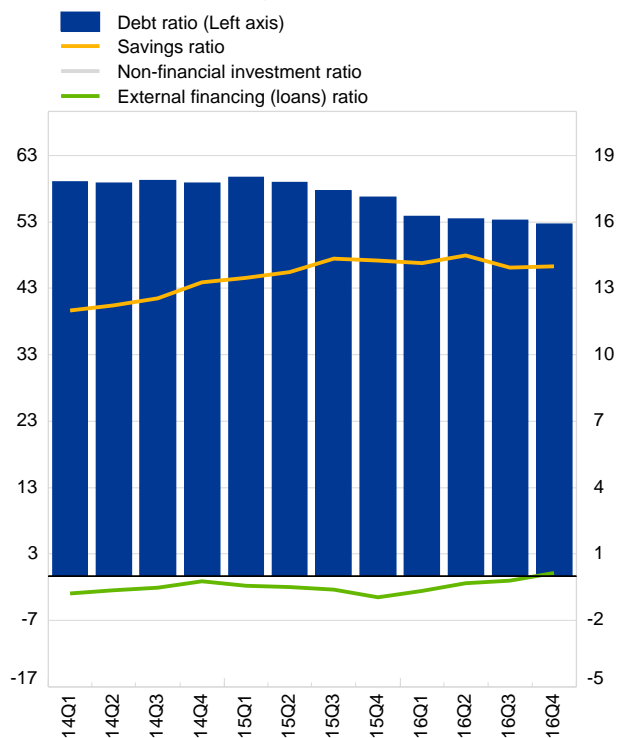
(national currency per capita, annual transactions and transactions over four quarters)



Note: charts 5 and 8 are not available for Croatia

7. Household saving, non-financial investment, external financing and debt

(transactions over four quarters as a percentage of disposable income, except for debt ratio: outstanding debt over disposable income)



	2015	2016	2017	2018	2019	2019 Q1	2019 Q2	2019 Q3	2019 Q4	2020 Q1
	<i>ECB reference exchange rate, average through period</i>									
Croatian kuna / Euro	7.61	7.53	7.46	7.42	7.42	7.42	7.42	7.39	7.44	7.49

9.A Household key indicators

	2015	2016	2017	2018	2019	2019 Q1	2019 Q2	2019 Q3	2019 Q4	2020 Q1
1.1 Disposable income per capita	<i>Annual percentage change</i>									
Nominal gross disposable income	2.8
Deflator of final consumption	-0.3	-1.1	0.9	1.4	0.8	0.5	0.6	1.5	0.6	1.2
Real gross disposable income	3.4
Real final consumption	3.6
1.2 Saving, investment and debt	<i>Percentage over disposable income</i>									
Savings ratio	14.3	14.0
Non-financial investment ratio										
External financing (loans) ratio	-1.0
Debt ratio	58.4	54.1	52.8	52.8
1.3 Employment	<i>Percentage over disposable income</i>									
Unemployment rate	16.2	13.1	11.1	8.4	6.6	6.9	6.8	6.4	6.3	6.1
Total employment, y-o-y%	1.2	0.3	2.2	1.8	1.5	2.8	0.4	0.9	1.9	-0.7

9.B Summary of accounts

	2015	2016	2017	2018	2019	2019 Q1	2019 Q2	2019 Q3	2019 Q4	2020 Q1
2.1 Decomposition of gross disposable income	<i>Contribution to annual percentage change</i>									
Compensation of employees (+)	2.3
Gross operating surplus (+)	0.2
Net social transfers (+)	-0.7
Property income/other transf.(+)	0.8
Direct taxes (-)	0.2
Gross disposable income	2.8
2.2 Saving, investment and net borrowing flows	<i>National currency per capita, four quarter sum</i>									
Saving, gross ⁽¹⁾	7,857.8
Non-financial investment, gross										
Net lending(+)/net borrowing(-)	5,235.6
2.3 Financial investment	<i>National currency per capita, four quarter sum</i>									
Currency and deposits	669.8	1,251.6	1,418.6	2,838.4	2,746.1	3,025.7	2,557.7	2,073.5	2,746.1	3,565.5
Debt securities	6.8	-9.4	-54.4	-3.1	-11.7	32.9	24.5	25.7	-11.7	-49.6
Investment funds and shares	1,867.9	-271.1	786.4	1,625.8	887.5	1,097.2	913.2	1,008.1	887.5	-67.5
Life insurance and pension schemes	483.9	551.6	1,012.4	1,206.6	3,525.7	2,132.1	2,563.9	2,993.0	3,525.7	1,320.8
Other assets	235.0	115.9	89.7	150.1	78.1	82.2	63.4	54.7	78.1	358.5
Total assets	3,263.4	1,638.6	3,252.7	5,817.9	7,225.8	6,370.1	6,122.8	6,154.9	7,225.8	5,127.7
2.4 Financial liabilities	<i>National currency per capita, four quarter sum</i>									
Short-term loans	-40.6	70.4	208.9	104.7	112.6	84.2	113.6	89.2	112.6	-10.0
Long-term loans	-478.3	6.8	976.8	1,771.8	2,221.3	1,885.9	1,927.5	2,102.5	2,221.3	1,921.6
Other liabilities	48.1	54.5	132.4	83.8	42.3	22.6	11.6	-20.7	42.3	-154.2
Total liabilities	-470.8	131.7	1,318.0	1,960.4	2,376.2	1,992.7	2,052.7	2,171.0	2,376.2	1,757.3

(1) Including net capital transfers.