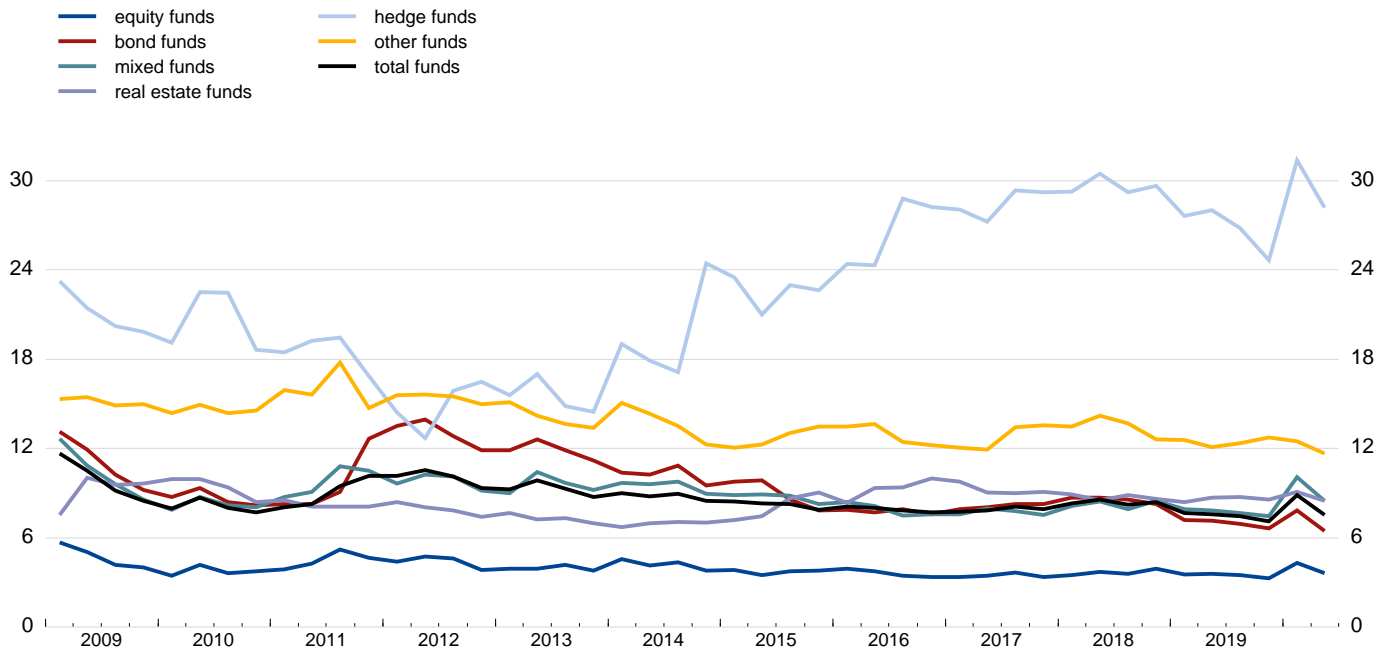


## 7. Structural risk

### 7.6 Non-MMF investment funds ratio of short term assets to short term liabilities

(euro area; percentages; last observation: Jun. 2020)



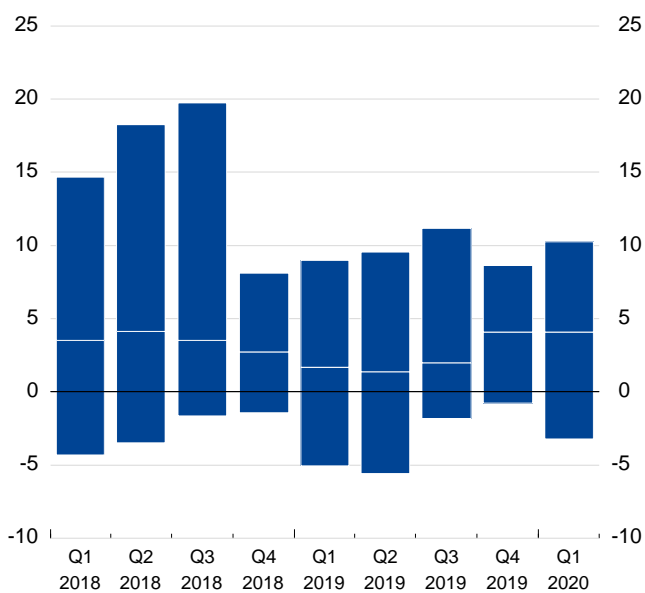
Source: ECB.

Notes: Short-term assets include non-MMF investment funds' holdings of debt securities and loans and deposits with original maturity up to one year; short-term liabilities include open-ended fund units issued and loans received with original maturity up to one year. Maturity breakdowns for loans and deposits are available from 2014 Q4 and are estimated for prior periods based on the maturity breakdowns in 2015 for these instruments (for respective counterparty sectors).

### 7.7 Insurance groups' profitability indicators

#### a. Gross premiums written - life insurance

(EU; annual growth rates; interquartile range and median; last observation: Q1 2020)

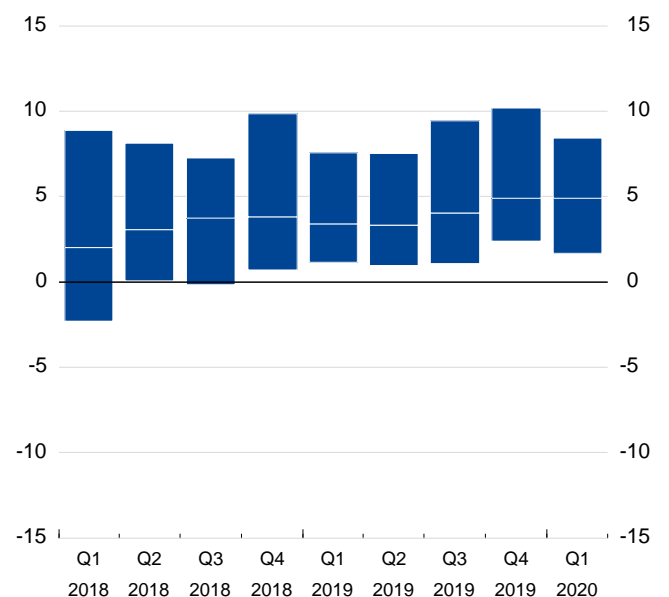


Source: EIOPA, based on Solvency II Reporting.

Notes: For more details on the Solvency II reporting please see Annex I to the risk dashboard

#### b. Gross premiums written - non-life insurance

(EU; annual growth rates; interquartile range and median; last observation: Q1 2020)



Source: EIOPA, based on Solvency II Reporting.

Notes: For more details on the Solvency II reporting please see Annex I to the risk dashboard