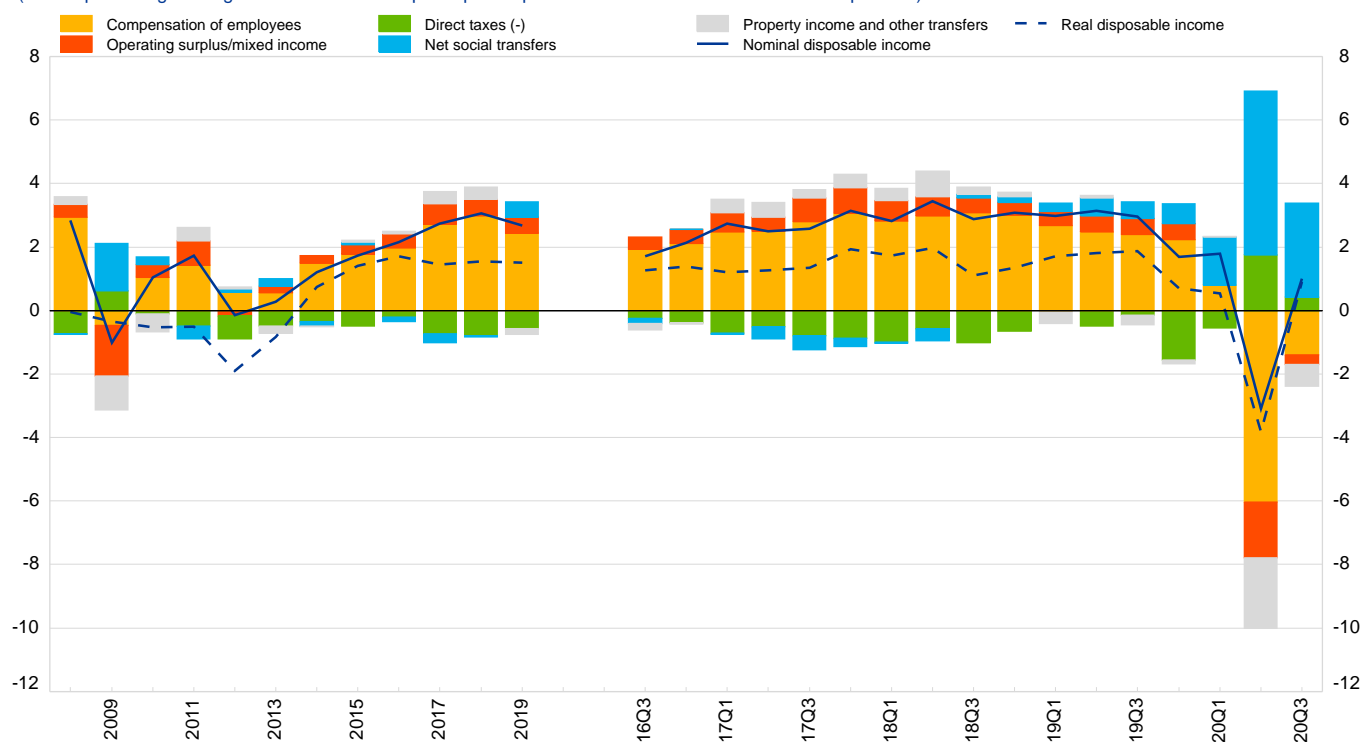


1.1 Household disposable income and components

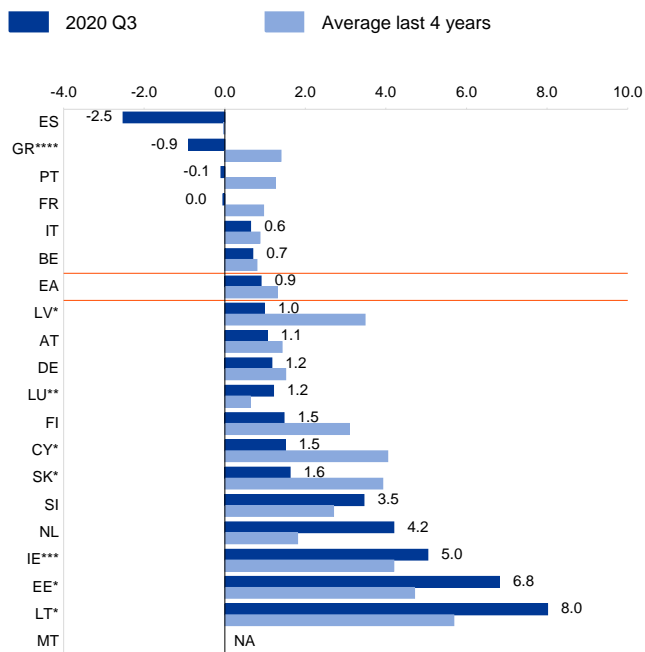
(annual percentage change of nominal and real per capita disposable income and contribution of components)



Sources: Eurostat and ECB calculations.

1.2 Real disposable income

(annual percentage change of per capita values)

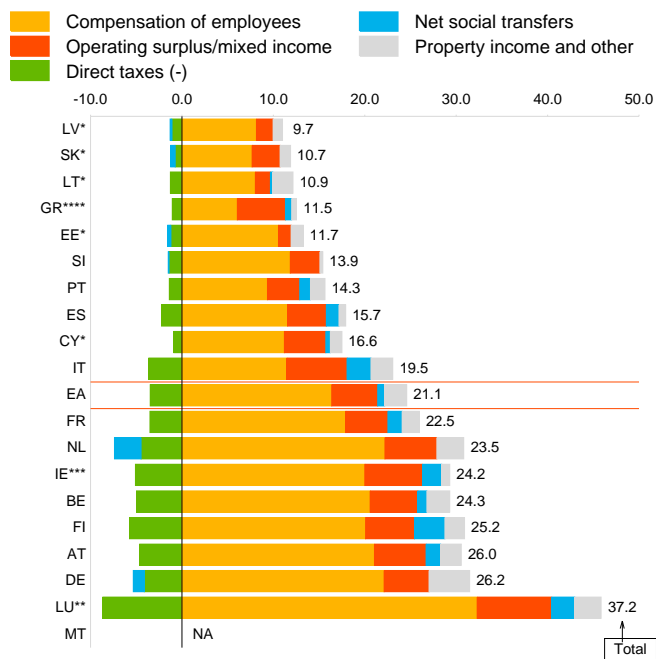


Sources: Eurostat and ECB calculations.
Note: EA = euro area.

* = annual data up to 2019.
** = annual data up to 2018.
*** = quarterly data up to 2020 Q2.
**** = quarterly data up to 2020 Q1.
NA = not available.

1.3 Composition of nominal disposable income

(EUR thousands per capita, in the four quarters to 2020 Q3)



Sources: Eurostat and ECB calculations.
Note: EA = euro area.

* = annual data up to 2019.
** = annual data up to 2018.
*** = quarterly data up to 2020 Q2.
**** = quarterly data up to 2020 Q1.
NA = not available.