

DENMARK

Government debt securities: debt service

2. Debt service due in 2 years ¹⁾

(as scheduled at end of Dec 2022; principal and interest expenditure during debt service period; average residual maturity in years)

	Debt service due in 2 years									Average residual maturity
	Total	Principal due in				Interest expenditure due in				
		Up to 1 year			Over 1 and up to 2 years	Up to 1 year			Over 1 and up to 2 years	
		Total	Up to 3 months	Over 3 months		Total	Up to 3 months	Over 3 months		
1	2	3	4	5	6	7	8	9	10	
EUR billions										
2019	20.6	8.4	1.0	7.3	9.1	1.6	0.4	1.2	1.5	7.9
2020	39.7	26.2	10.8	15.5	10.8	1.4	0.4	1.1	1.2	7.5
2021 Q4	32.3	20.1	5.9	14.2	10.1	1.1	0.3	0.8	1.1	8.1
2022 Q1	23.1	11.1	3.3	7.9	9.8	1.1	0.3	0.8	1.0	8.7
Q2	21.2	9.5	3.6	6.0	9.6	1.0	0.3	0.8	1.0	8.9
2022 Aug.	21.7	10.1	9.3	0.8	9.6	1.0	0.3	0.8	1.0	8.7
Sep.	18.5	7.1	6.9	0.3	9.4	1.0	0.3	0.8	0.9	9.0
Oct.	17.1	5.7	5.3	0.4	9.4	1.0	0.3	0.8	0.9	9.0
Nov.	24.5	12.2	1.7	10.6	10.4	1.0	0.3	0.8	0.9	9.2
Dec.	23.7	11.4	1.8	9.6	10.4	1.0	0.3	0.8	0.9	9.2
As a percentage of GDP										
2019	6.6	2.7	0.3	2.4	3.0	0.5	0.1	0.4	0.5	-
2020	12.7	8.4	3.4	5.0	3.5	0.5	0.1	0.3	0.4	-
2021 Q4	9.6	6.0	1.8	4.2	3.0	0.3	0.1	0.2	0.3	-
2022 Q1	6.8	3.3	1.0	2.3	2.9	0.3	0.1	0.2	0.3	-
Q2	6.3	2.8	1.1	1.8	2.9	0.3	0.1	0.2	0.3	-
2022 Aug.	6.5	3.0	2.8	0.2	2.8	0.3	0.1	0.2	0.3	-
Sep.	5.5	2.1	2.0	0.1	2.8	0.3	0.1	0.2	0.3	-
Oct.	5.1	1.7	1.6	0.1	2.8	0.3	0.1	0.2	0.3	-
Nov.	7.3	3.6	0.5	3.1	3.1	0.3	0.1	0.2	0.3	-
Dec.	7.0	3.4	0.5	2.8	3.1	0.3	0.1	0.2	0.3	-

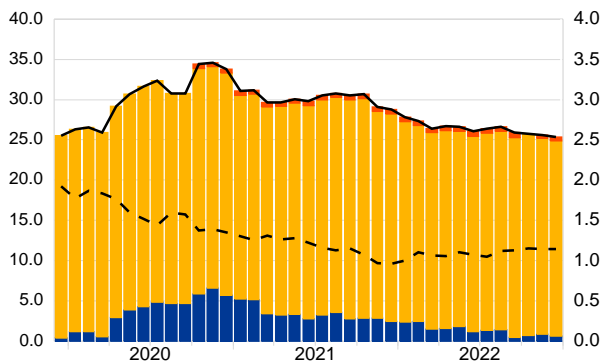
Source: ECB.

1) The face value of debt securities issued at discount/premium include a component related to interest.

C1 Debt securities outstanding amounts

(as a percentage of GDP, percentages per annum)

- Zero coupon (left-hand scale)
- Fixed rate (left-hand scale)
- Floating rate (left-hand scale)
- Total debt securities (left-hand scale)
- - Average nominal yield (right-hand scale)

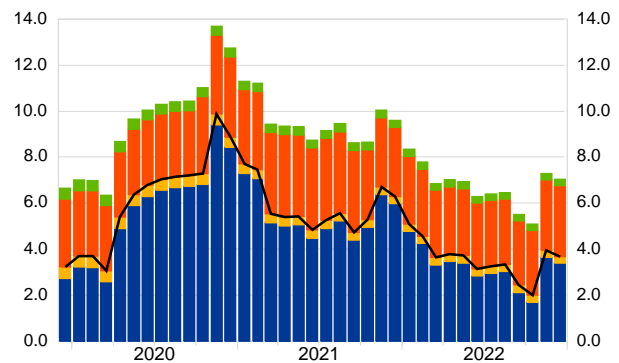


Source: ECB.

C2 Debt service due in 2 years

(as a percentage of GDP)

- Principal due in up to 1 year
- Interest due in up to 1 year
- Principal due over 1 and up to 2 years
- Interest due over 1 and up to 2 years
- Debt service due in 1 year



Source: ECB.