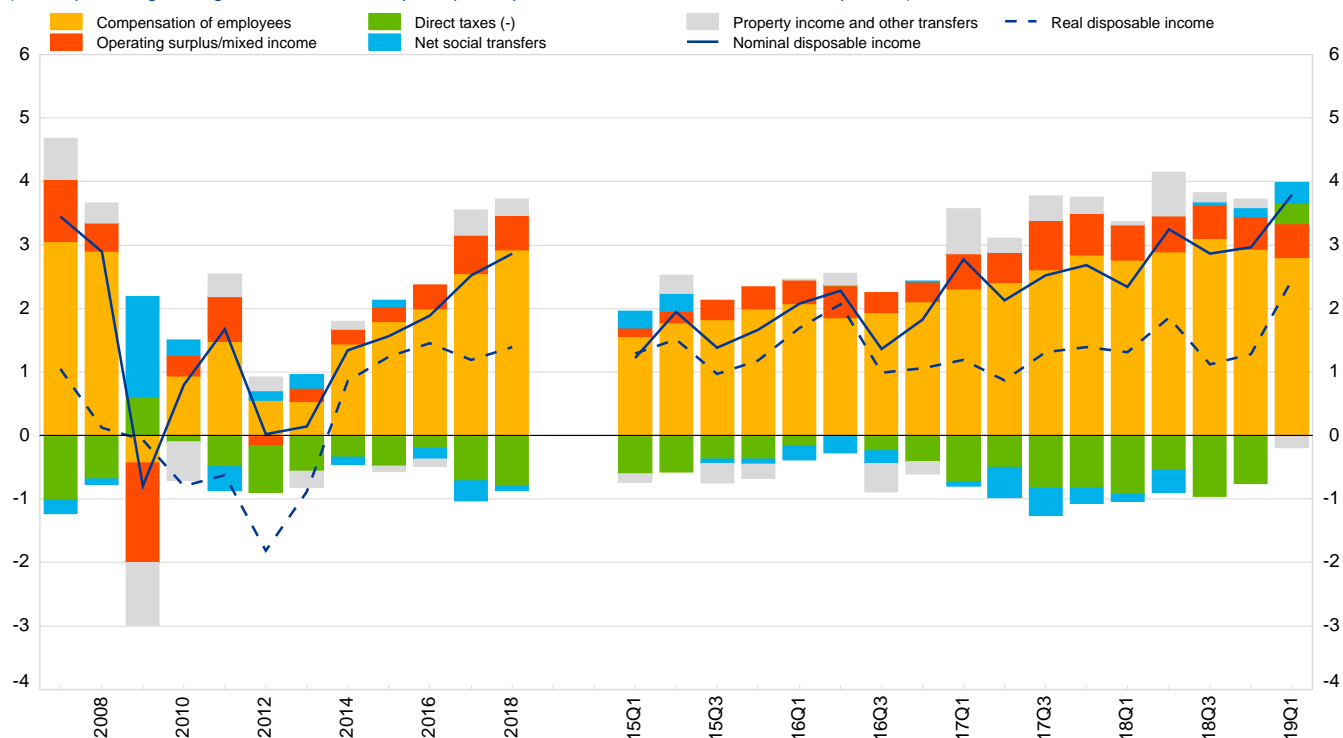


1.1 Household disposable income and components

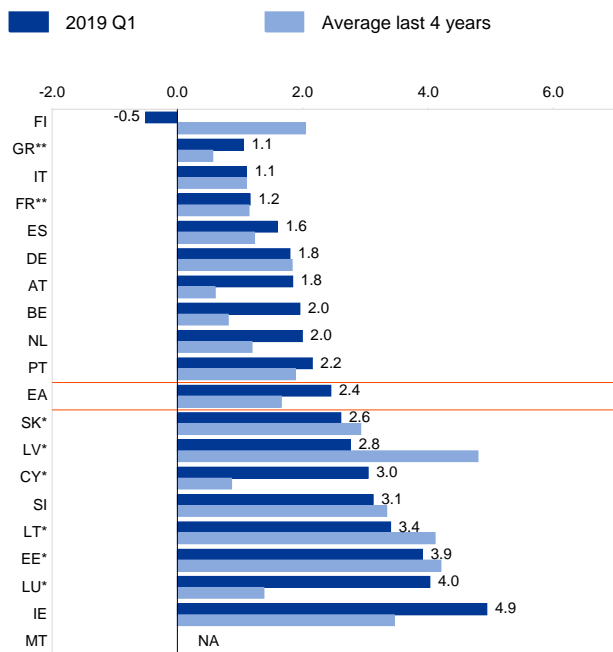
(annual percentage change of nominal and real per capita disposable income and contribution of components)



Sources: Eurostat and ECB calculations.

1.2 Real disposable income

(annual percentage change of per capita values)



Sources: Eurostat and ECB calculations.

Note: EA = euro area.

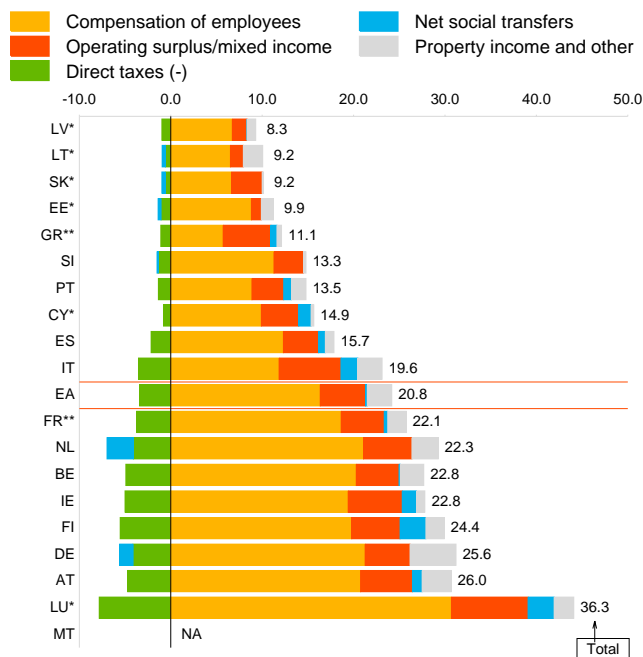
* = annual data up to 2017.

** = quarterly data up to 2018Q4.

NA = not available.

1.3 Composition of nominal disposable income

(EUR thousands per capita, in the four quarters to 2019 Q1)



Sources: Eurostat and ECB calculations.

Note: EA = euro area.

* = annual data up to 2017.

** = quarterly data up to 2018Q4.

NA = not available.