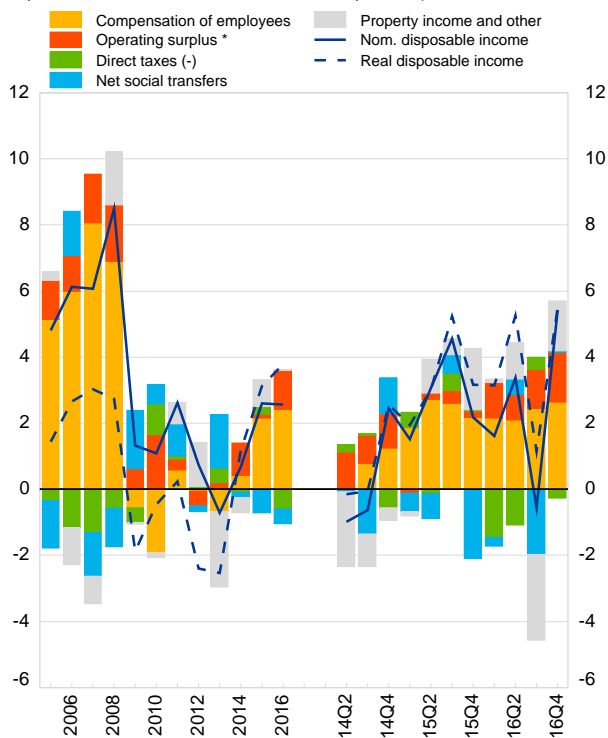


1. Household disposable income and components

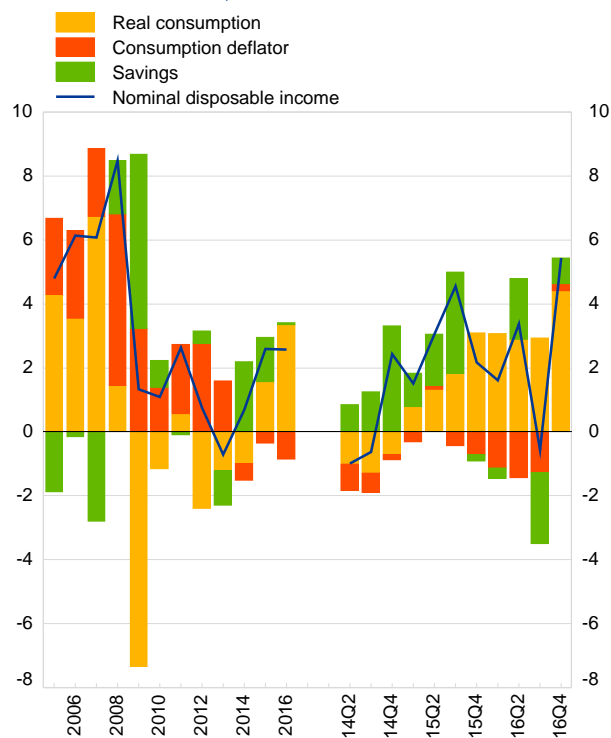
(annual percentage change of real and nominal per capita disposable income and contribution of components)



* Including mixed income.

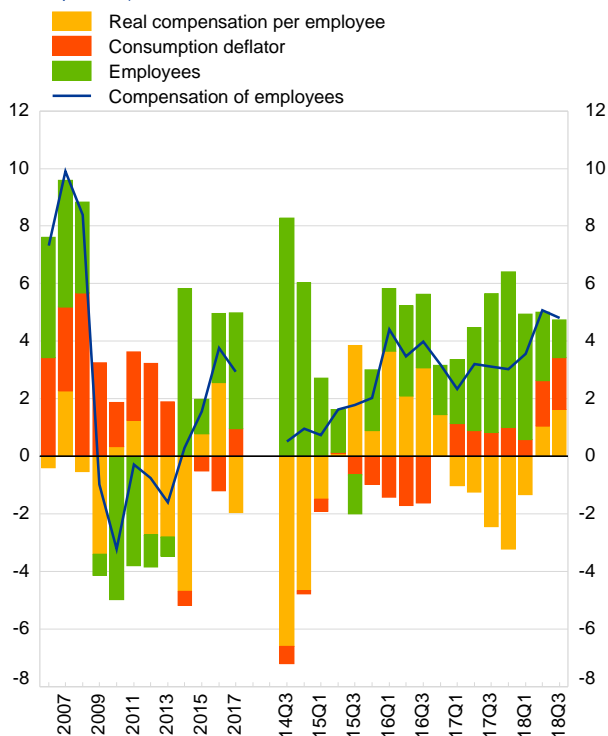
2. Household nominal disposable income and its uses

(annual percentage change of per capita nominal disposable income and breakdown into its uses)



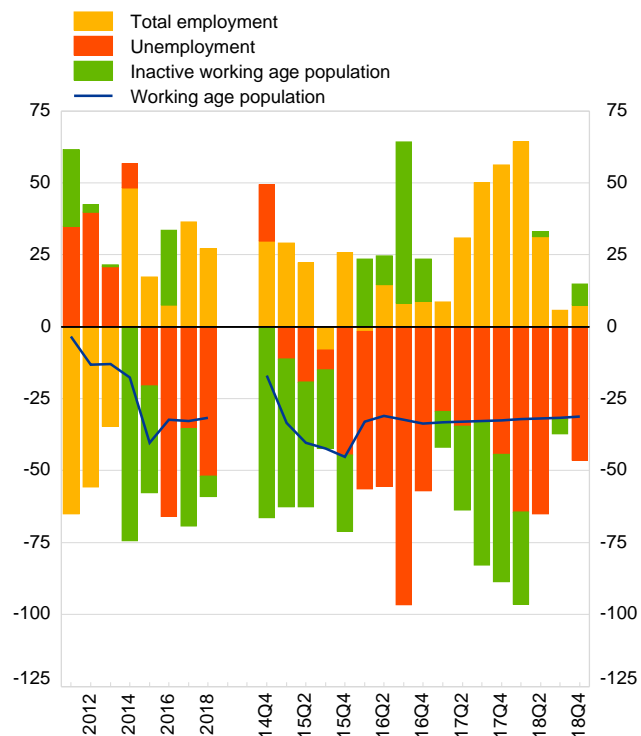
3. Compensation of employees and components

(annual percentage change of compensation of employees and its components)



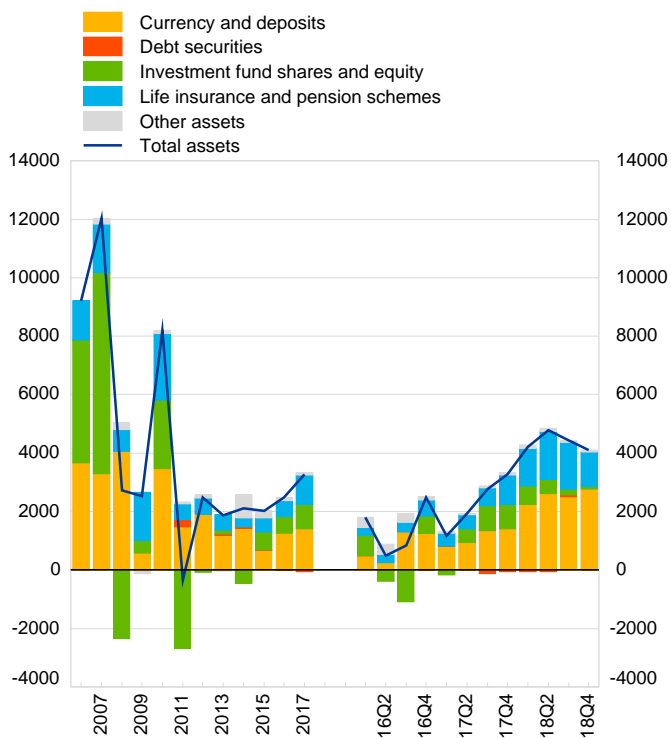
4. Labour market participation, employment and unemployment

(thousands of people aged 15 to 64, year-to-year difference)



6. Household investments in financial assets and contributions by components

(national currency per capita, annual transactions and transactions over four quarters)



Note: charts 5 and 8 are not available for Croatia

7. Household saving, non-financial investment, external financing and debt

(transactions over four quarters as a percentage of disposable income, except for debt ratio: outstanding debt over disposable income)

